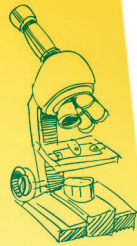




**RISE** ● (noun) **1** a prestigious award **2** an academic adventure  
**3** an opportunity to grow and develop **4** a chance to travel

# RESEARCH INSPIRED STUDENT ENRICHMENT (RISE) AWARDS GUIDELINES

The Research & Development Corporation (RDC) is a provincial Crown corporation mandated to improve the focus, quantity, quality and relevance of research and development (R&D) for the long-term economic benefit of Newfoundland and Labrador. Our success hinges on leveraging opportunities, enhancing collaboration and building new capacity as a R&D performer through strategic investments in people, research and infrastructure.



## PROGRAM OVERVIEW

The Research Inspired Student Enrichment (RISE) Awards provide top Newfoundland and Labrador high school students with the opportunity to attend research-related enrichment programs focused on science, technology, engineering and mathematics (STEM). Through these awards, RDC recognizes the need for early development of the talent required by R&D stakeholders and the importance of R&D to innovation and economic growth.

Successful applicants will attend one of four summer enrichment programs in 2013:

1. **Research Science Institute** (RSI) is a partnership between the Center for Excellence in Education (CEE), a not-for-profit organization based in MacLean, Virginia, and the Massachusetts Institute of Technology (MIT) which offers a six-week summer enrichment program in the Boston, Massachusetts area emphasizing advanced theory and research in STEM fields. This program introduces students to the entire research process, from literature review to experimental design and analysis.
2. **Shad Valley** is a four-week program held across 10 Canadian university campuses which focuses on bringing STEM research and entrepreneurship together.
3. **Da Vinci Engineering Enrichment Program** (DEEP) is a four-week program held at the University of Toronto which offers pre-university engineering and science enrichment and research project design opportunities.
4. **Students on Ice** (SOI) is a two-week ship- and land-based Arctic expedition providing students with education and research opportunities to help gain a real world perspective on present and future challenges facing the Arctic region including climate change.

# RESEARCH INSPIRED STUDENT ENRICHMENT (RISE) AWARDS GUIDELINES

## OBJECTIVE

The main objective of the RISE Awards is to expose top Newfoundland and Labrador high school students to research activities at an early stage in their education.

By exposing them to research, a secondary goal of the program is to encourage top Newfoundland and Labrador high school students to pursue research-related education and career paths in science, technology, engineering and mathematics.

## ELIGIBILITY

Current Level II students attending high school in Newfoundland and Labrador are eligible to apply for these awards. Students must meet the following criteria to be considered for an award:

- Minimum 90% average over all courses completed in Level I
- Minimum 90% average across all science courses completed in Level I
- Minimum 90% average across all mathematics courses completed in Level I
- Minimum of eight (8) credits in science and mathematics courses completed by the end of the 2012-2013 academic year (Level II), including those completed in Level I

Confirmation of successful completion of at least eight (8) credits in science and mathematics courses by the end of Level II will be required via an official transcript by August 31, 2013.

## ADDITIONAL REQUIREMENTS FOR RSI

Beyond the eligibility criteria specified above, applicants being considered for an RSI award will be subject to a more stringent screening process, due to the demanding nature of the RSI curriculum. If RSI is indicated as the applicant's first choice of program, then the following criteria will be used:

- Minimum of 12 credits in science and mathematics courses completed by the end of the 2012-2013 academic year (Level II), including those completed in Level I

*Applicants indicating RSI as their first choice of program should be aware of the additional requirements of attending the RSI program, which may include supplemental advance reading material and coursework. Applicants are responsible for ensuring their awareness of the program requirements independent of application to RDC.*



# RESEARCH INSPIRED STUDENT ENRICHMENT (RISE) AWARDS GUIDELINES

## AWARD STRUCTURE AND LEVEL OF SUPPORT

A maximum of two (2) placements to each of RSI and SOI will be available under the RISE Awards, along with up to 11 placements for Shad Valley or DEEP. A maximum of 15 awards will be given under this program. Applicants are required to rank the enrichment programs in order of preference, but there is no guarantee that a first choice will be offered.

The award structure is as follows:

Program	Registration Fees*	Travel/ Expenses Stipend
RSI	Full registration fee will be covered <i>Note: 2012 tuition was \$9,000 (USD)</i>	\$3,000
Shad Valley	Full registration fee will be covered <i>Note: 2012 tuition was \$3,850</i>	\$2,000
DEEP	Full registration fee will be covered <i>Note: 2012 tuition was \$4,155</i>	\$2,000
SOI	Full registration fee will be covered <i>Note: 2013 tuition is \$9,785</i>	\$2,000

\*Registration fees cover full tuition and living expenses, including accommodations and most meals, but not travel expenses to/from the enrichment program.

## APPLICATION PROCESS

A complete application package, prepared in English, must be received by **4:30 PM on November 8, 2012**, at the following address:

**In person, by courier or regular mail to:**

68 Portugal Cove Road, St. John's, NL, A1B 2L9

The application package must include the following two (2) documents:

- ✓ A signed, completed RDC application form; and
- ✓ A copy of the applicant's official 2011-2012 (Level I) transcript issued by the Department of Education.

*Note that incomplete or late applications will not be considered.*

*Following notification by RDC, successful RISE Award applicants will then be required to apply directly to the enrichment program using the submission procedures and timelines required by the respective program. RSI applicants must be nominated by RDC to apply for that program, whereas other RISE award holders may apply to either Shad Valley, DEEP or SOI.*

# RESEARCH INSPIRED STUDENT ENRICHMENT (RISE) AWARDS GUIDELINES

## ASSESSMENT PROCESS

Applications will be assessed on a competitive basis, using the following criteria:

Assessment Criteria	Criteria Weighting
Academic achievement (including overall average in Level I, grades in completed mathematics and science courses in Level I, and the level and number of mathematics and sciences courses completed by the end of Level II)	80%
Applicant profile demonstrating preparedness for the enrichment program and potential interest in R&D. Applications should address the following considerations: <ul style="list-style-type: none"><li>• Previously completed enrichment programs</li><li>• Relevant work experience</li><li>• Science fair participation</li><li>• Volunteer and other relevant activities</li><li>• Other indicators of an interest in science, technology, engineering and mathematics outside of the school curriculum</li><li>• Future study, career and research interests, highlighting any potential for R&amp;D activities with relevance to Newfoundland and Labrador</li></ul>	10%
Understanding the importance of R&D to the Newfoundland and Labrador economy	10%

## NOTIFICATION

Notifications for the RISE Awards will be sent within five (5) weeks of the application deadline.

## DISBURSEMENT

RDC will disburse the registration fees for each program directly to RSI, Shad Valley, DEEP or SOI, where applicable. The travel/expenses stipend will be disbursed to the successful applicant. Prior to disbursement of the travel/expenses stipend, RDC will require confirmation of acceptance in the enrichment program.





RISC /risk/ noun 1 a computer operations at high speed. 2 computer [acronym, from reduced instruction set computer]

to their feet; rose from the table). b formal get out of bed, esp (she rose early). 5 recover a standing or vertical position to my full height). 6 (of a meeting etc.) cease (the flood has risen, the court will rise next week)

**RISE** ● (noun) **1** a prestigious award **2** an academic adventure  
**3** an opportunity to grow and develop **4** a chance to travel



### For More Information:

Research & Development Corporation  
68 Portugal Cove Road  
St. John's, NL A1B 2L9 Canada

**Tel:** 709.758.0913

**Fax:** 709.758.0927

**Email enquiries:** [programs@rdc.org](mailto:programs@rdc.org)

[www.rdc.org](http://www.rdc.org)



RISE Awards (RDC)



@RDC NL, #RISEAWARDS